

SOCIAL SECURITY ADMINISTRATION

January 27, 2012

Commissioner
Michael J. Astrue

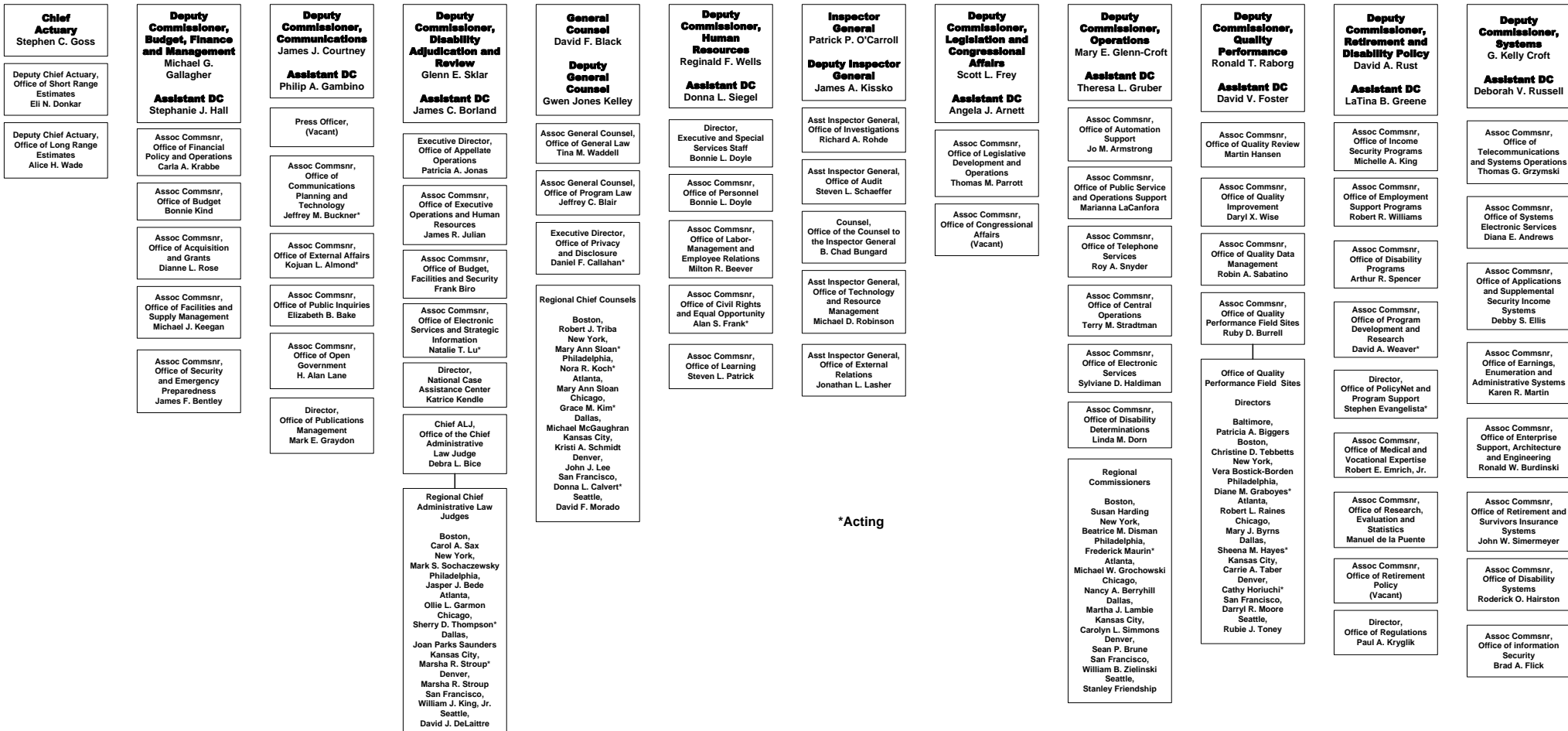
Deputy Commissioner
Carolyn W. Colvin

Chief of Staff
Jo Tittel

Deputy Chief of Staff
Dean S. Landis

Executive Secretary
Tiffany L. Flick*

Office of International Programs
Diane K. Braunstein



*Acting